



Roxtec SF EMC transit

Transit for EMC with metal frame and flange for welding.

The Roxtec SF EMC is a cable and pipe transit ensuring electromagnetic compatibility. The transit frame is available in different materials and with a single or various combinations of openings. The frame is produced in 10mm thick metal and has a flange to simplify welding to imprecise holes. There is a choice between Roxtec ES modules for electromagnetic shielding and PE modules that protect against conducted disturbances. The modules adapt to cables and pipes of different sizes and can be used to build in spare capacity in the seal. Roxtec EC (electrical continuity) test sticks are available to help indicate the electrical performance of the transit installation.

- Easy to maintain and inspect
- Provides built-in spare capacity

Product characteristics



Fire rated



Watertight



Gas-tight



IP/UL NEMA



EMI protection

Structure of installation



Metal

Mounting type



Welding

Ratings & certificates

Fire

- A-CLASS according to IMO 2010 FTP Code
- H-CLASS according to IMO 2010 FTP Code + HC fire load curve
- Jet fire according to ISO 22899-1 and OTI 95634

Tightness

- Gas: 2.5 bar (catastrophic)
- Water: 4 bar (catastrophic)
- IP 66/67

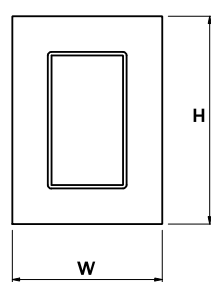
Supports

- Electromagnetic shielding
- Potential equalization

Frame dimensions

in/lbs

The frame variants below are a limited selection. For the full range of frames and configurations, please visit [roxtec.com](https://www.roxtec.com).

	Product	Frame openings	Packing space	External dimensions W x H x D	Aperture dimensions w x h	Weight	Art. no
	SF 6x1 ALU	1	4.724 x 7.087	10.256 x 14.094 x 2.362	7.913(+0.591/-0.591) x 11.732(+0.591/-0.591)	6.5	SFF6000000131
	SF 6x2 ALU	2	4.724 x 7.087	15.394 x 14.094 x 2.362	13.071(+0.591/-0.591) x 11.732(+0.591/-0.591)	9.2	SFF6000000231
	SF 6x3 ALU	3	4.724 x 7.087	20.531 x 14.094 x 2.362	18.189(+0.591/-0.591) x 11.732(+0.591/-0.591)	13.2	SFF6000000331
	SF 6x1 PRIMED	1	4.724 x 7.087	10.256 x 14.094 x 2.362	7.913(+0.591/-0.591) x 11.732(+0.591/-0.591)	16.9	SFF6000000112
	SF 6x2 PRIMED	2	4.724 x 7.087	15.394 x 14.094 x 2.362	13.071(+0.591/-0.591) x 11.732(+0.591/-0.591)	26.6	SFF6000000212
	SF 6x3 PRIMED	3	4.724 x 7.087	20.531 x 14.094 x 2.362	18.189(+0.591/-0.591) x 11.732(+0.591/-0.591)	36.3	SFF6000000312
	SF 6x1 AISI316	1	4.724 x 7.087	10.256 x 14.094 x 2.362	7.913(+0.591/-0.591) x 11.732(+0.591/-0.591)	18.1	SFF6000000121
	SF 6x2 AISI316	2	4.724 x 7.087	15.394 x 14.094 x 2.362	13.071(+0.591/-0.591) x 11.732(+0.591/-0.591)	26.9	SFF6000000221
	SF 6x3 AISI316	3	4.724 x 7.087	20.531 x 14.094 x 2.362	18.189(+0.591/-0.591) x 11.732(+0.591/-0.591)	36.7	SFF6000000321



Sealing components

Sealing components



RM ES module with Multidiameter™



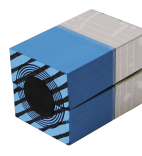
Lubricant



Wedge & Wedgekit ES



RM ES solid compensation module



RM PE module with Multidiameter™



Accessories ES and BG



Holder tools



RM PE solid compensation module



Wedge & Wedgekit



Stayplate



ES sealing kit



Welding tools

For detailed information, please visit [roxtec.com](https://www.roxtec.com).

The product information provided by Roxtec does not release the purchaser of the Roxtec system, or part thereof, from the obligation to independently determine the suitability of the products for the intended process, installation and/or use.

Roxtec gives no guarantee for the Roxtec system or any part thereof and assumes no liability for any loss or damage whatsoever, whether direct, indirect, consequential, loss of profit or otherwise, occurred or caused by the Roxtec systems or installations containing components not manufactured by an authorized manufacturer and/or occurred or caused by the use of the Roxtec system in a manner or for an application other than for which the Roxtec system was designed or intended.

Roxtec expressly excludes any implied warranties of merchantability and fitness for a particular purpose and all other express or implied representations and warranties provided by statute or common law. User determines suitability of the Roxtec system for intended use and assumes all risk and liability in connection therewith. In no event shall Roxtec be liable for indirect, consequential, punitive, special, exemplary or incidental damages or losses.

The Roxtec products are offered and sold in accordance with the conditions of the Roxtec General Terms of Sales. The latest version of the Roxtec General Terms of Sales can be downloaded from <https://www.roxtec.com/en/about-us/about-roxtec/general-terms-of-sales/>

We reserve the right to make changes to the product and technical information without further notice. Any errors in print or entry are no claims for indemnity. The content of this publication is the property of Roxtec International AB and is protected by copyright.

This document was generated on: 2024-04-27